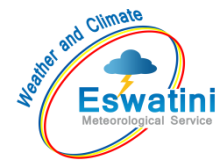


AGROMETEOROLOGICAL BULLETIN

Doc No: TEA 3/3/7/2 F-004
Revision No: 1
Effective Date: 01.07.2017
Page No: 1 of 5
Approved by:



REPORTING PERIOD:
11 – 20 JANUARY 2025



ISSUE No.: 11

SEASON: 2024/25

RELEASED: 24/01/2025

CONTENTS

CONTENTS	1
HIGHLIGHTS	1
RAINFALL AND TEMPERATURES	2
RAINFALL	2
TEMPERATURES	3
MAIZE AND OTHER CROPS.....	3
MAIZE CROP STAGE AND CONDITION..	3
OTHER CROPS	3
CURRENT FARMING ACTIVITY	3
LIVESTOCK AND PASTURES	4
WATER SITUATION	4
MEDIUM-TERM OUTLOOK	4
RAINFALL	4
TEMPERATURE.....	4
SOIL MOISTURE	4
WIND SPEED	4

HIGHLIGHTS

- **About average rainfall received...**
- **Good vegetation condition...**
- **Weeding farming activities...**
- **Not much rainfall is anticipated...**
- **Hot to very hot temperatures forecasted...**
- **Slight decrease in soil moisture expected...**

Compiled and Issued by: Agrometeorological Unit,

Swaziland Meteorological Service, Ministry of Tourism and Environmental Affairs.

Box 2652, Mbabane, Swaziland. ☎ (+268) 2404 8859 / 2404 6274. Fax: 2404 1530

E-mail: dudu@swazimet.gov.sz

AGROMETEOROLOGICAL BULLETIN

Doc No: TEA 3/3/7/2 F-004

Revision No: 1

Effective Date: 01.07.2017

Page No: 2 of 5

Approved by:

RAINFALL AND TEMPERATURES

RAINFALL

Above average rainfall continued to be observed in the 2nd dekad of January 2025 nationwide (Figure 1) and (Map 1).

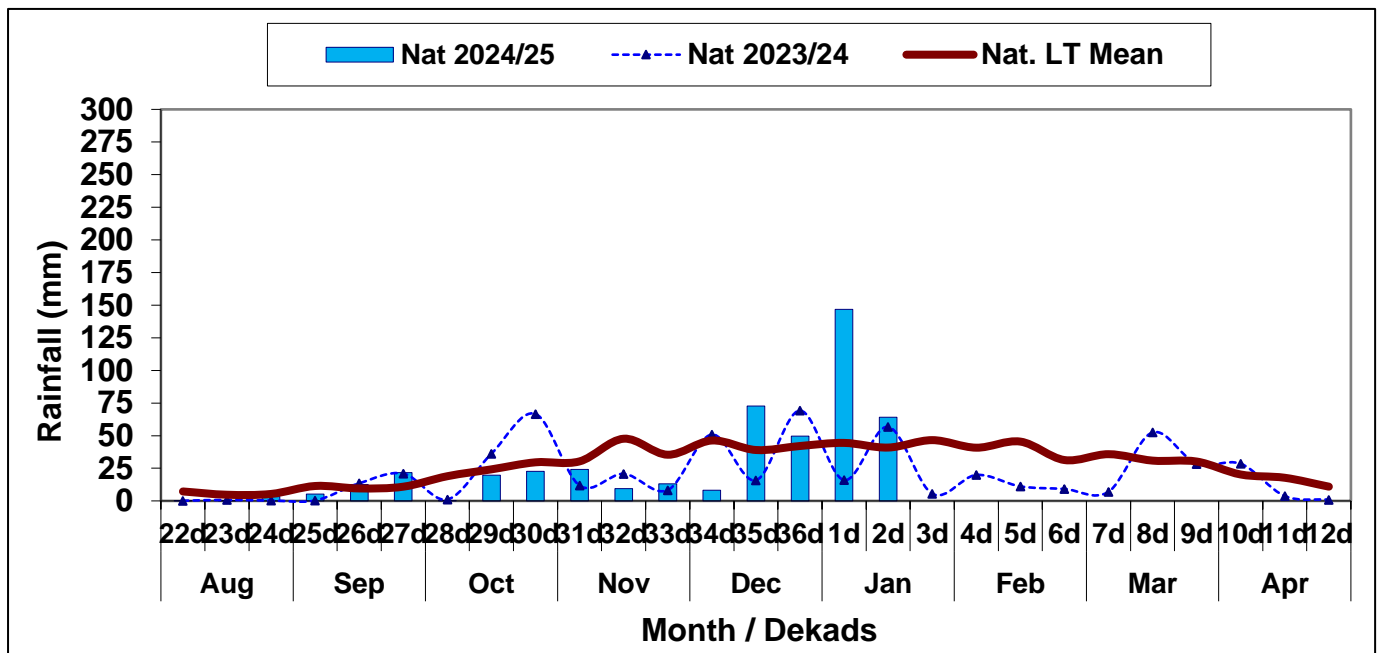
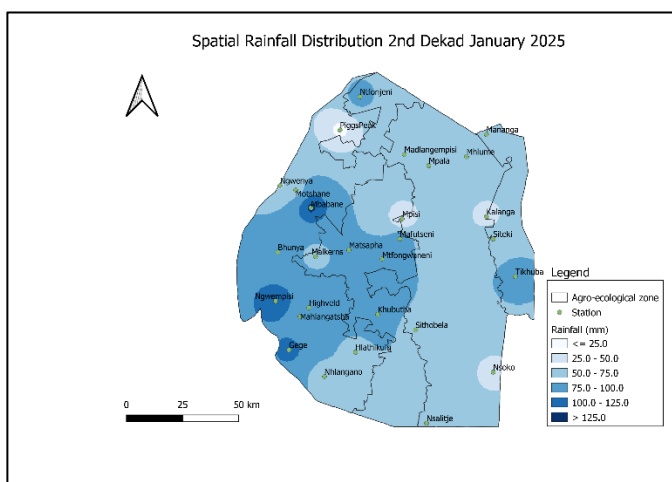
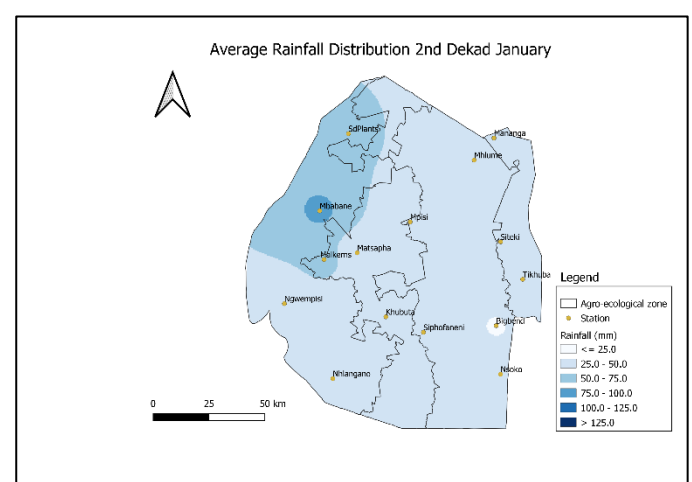


Figure 1: Rainfall distribution 2nd dekad January 2025



Map 1: Spatial rainfall distribution 2nd dekad January 2025



Map 2: Average Rainfall distribution 2nd dekad January

Compiled and Issued by: Agrometeorological Unit,

Swaziland Meteorological Service, Ministry of Tourism and Environmental Affairs.

Box 2652, Mbabane, Swaziland. ☎ (+268) 2404 8859 / 2404 6274. 📠 Fax: 2404 1530

E-mail: dudu@swazimet.gov.sz

AGROMETEOROLOGICAL BULLETIN

Doc No: TEA 3/3/7/2 F-004

Revision No: 1

Effective Date: 01.07.2017

Page No: 3 of 5

Approved by:

All the Agro-ecological zones received above normal rainfall during the reporting period (**Table 1**).

Table 1: Rainfall (mm) 2nd dekad January 2025

	HV	MV	LV	LP	
2023/24	49	64	50	80	
Average	52	42	32	39	
2024/25	72	66	47	76	
Anomaly	21	24	16	37	

TEMPERATURES

Cool to warm temperatures generally prevailed during the reporting period (**Figure 2**) and (**Figure 3**).

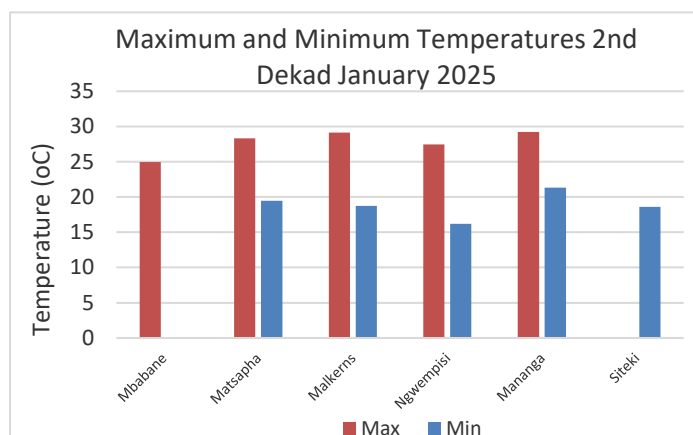


Figure 2: Maximum and Minimum temperatures 2nd dekad of January 2025

MAIZE AND OTHER CROPS

MAIZE CROP STAGE AND CONDITION

The Agriculture Stress Index indicates that crops were not experiencing water stress during the reporting period.

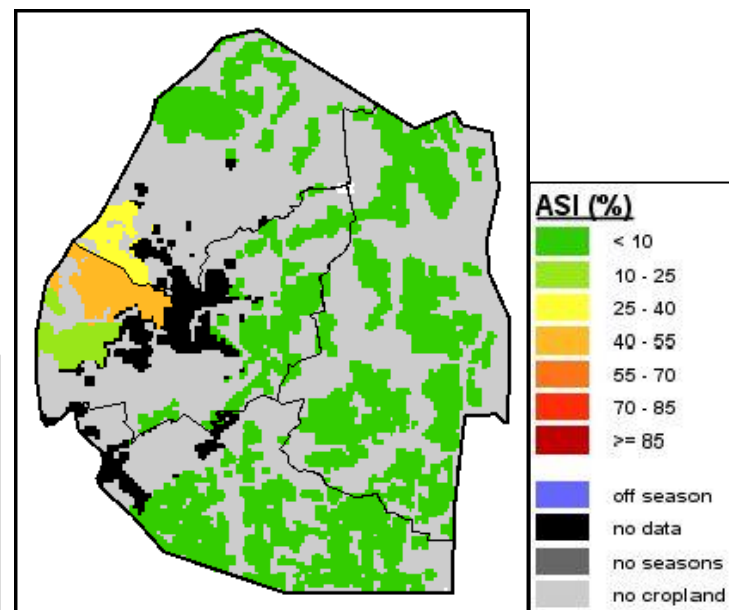


Image 1: Agriculture Stress Index 2nd dekad January 2025
Source: FAO-GIEWS

OTHER CROPS

Information not available.

CURRENT FARMING ACTIVITY

Information not available.

Compiled and Issued by: Agrometeorological Unit,

Swaziland Meteorological Service, Ministry of Tourism and Environmental Affairs.

Box 2652, Mbabane, Swaziland. ☎ (+268) 2404 8859 / 2404 6274. Fax: 2404 1530

E-mail: dudu@swazimet.gov.sz

AGROMETEOROLOGICAL BULLETIN

Doc No: TEA 3/3/7/2 F-004

Revision No: 1

Effective Date: 01.07.2017

Page No: 4 of 5

Approved by:

LIVESTOCK AND PASTURES

Information not available.

WATER SITUATION

Most dam reservoirs are reported to be at full capacities.

MEDIUM-TERM OUTLOOK

RAINFALL

Not much rainfall is expected in the outlook period.

TEMPERATURE

Hot to very hot temperatures are anticipated in the outlook period.

SOIL MOISTURE

Decrease in soil moisture is expected in the outlook period.

WIND SPEED

Wind will generally be light to moderate in the outlook period

NB: Outlook period is ten days from date of issue

Compiled and Issued by: Agrometeorological Unit,

Swaziland Meteorological Service, Ministry of Tourism and Environmental Affairs.

Box 2652, Mbabane, Swaziland. ☎ (+268) 2404 8859 / 2404 6274. Fax: 2404 1530

E-mail: dudu@swazimet.gov.sz

AGROMETEOROLOGICAL BULLETIN

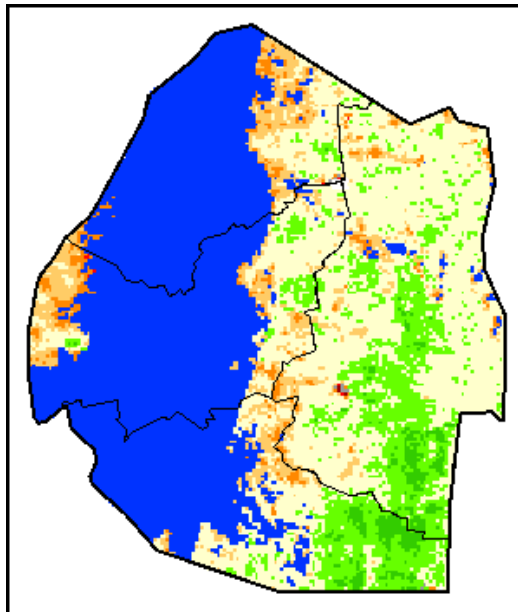
Doc No: TEA 3/3/7/2 F-004

Revision No: 1

Effective Date: 01.07.2017

Page No: 5 of 5

Approved by:



Legend

Difference to LTA

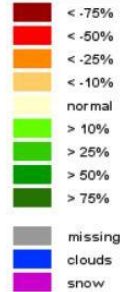
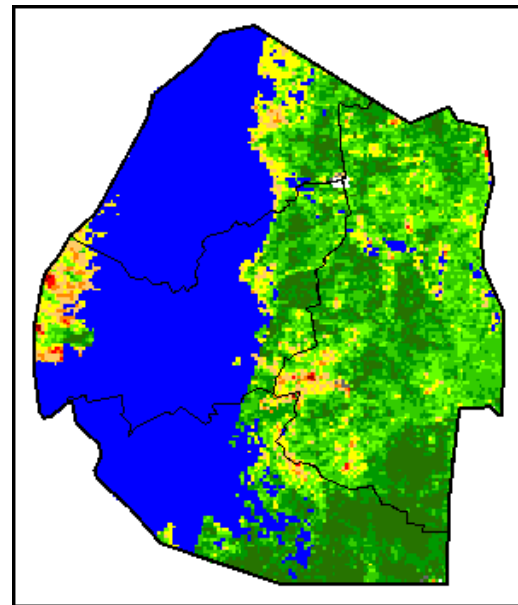


Image 2: Normalized Difference Vegetation Index (NDVI) Anomaly (2nd Dekad January 2025)
Source: FAO-GIEWS



Legend

VHI

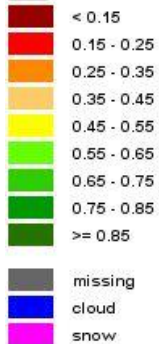


Image 3: Vegetation Health Index (VHI) (2nd Dekad January 2025)
Source: FAO-GIEWS

Compiled and Issued by: Agrometeorological Unit,

Swaziland Meteorological Service, Ministry of Tourism and Environmental Affairs.

Box 2652, Mbabane, Swaziland. ☎ (+268) 2404 8859 / 2404 6274. Fax: 2404 1530

E-mail: dudu@swazimet.gov.sz